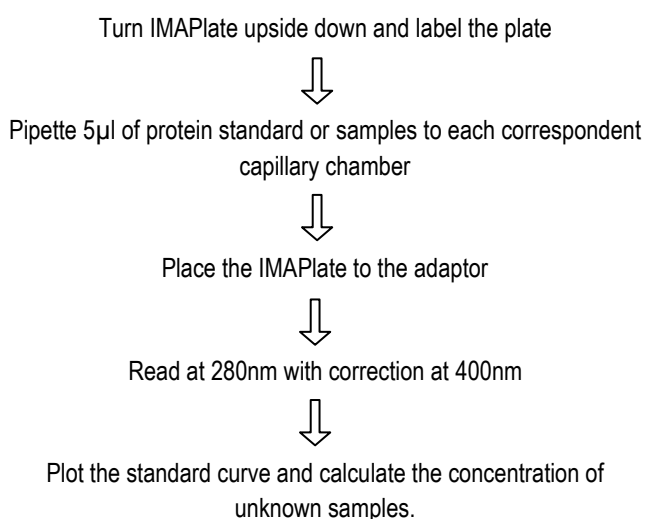


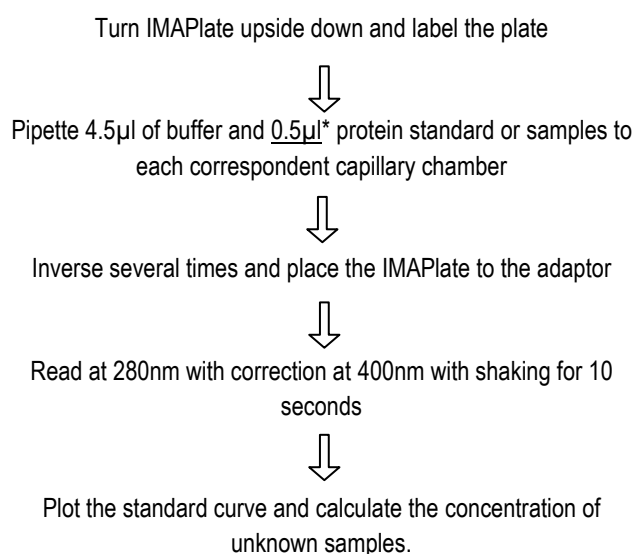
**Using IMAPlate 5RC96 to quantify total protein by UV spectrophotometric method**

**ASSAY PROCEDURE:**

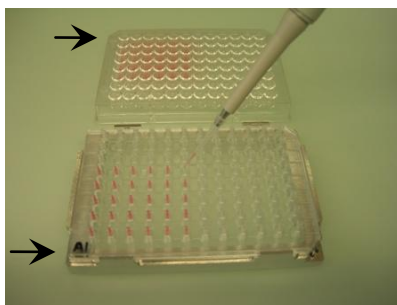
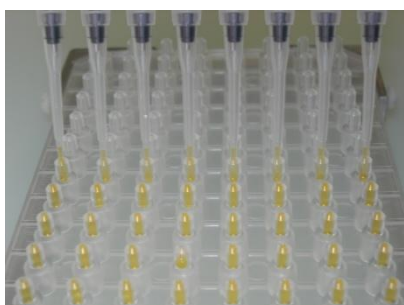
**For low protein concentration samples (< 10mg/ml)**



**For high protein concentration samples (<100mg/ml)**



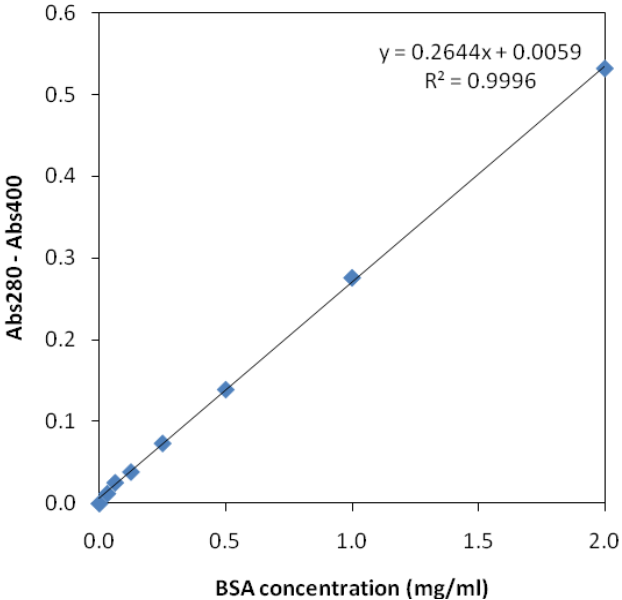
Note: \* The upper detection range can be further extended five-fold when the sample volume goes down to 0.1µl.



**RESULTS:**

1) BSA standard curve for samples up to 10mg/ml:

mg/ml	Mean Abs	CV%
2	0.531	0.8
1	0.276	0.0
0.5	0.139	2.0
0.25	0.074	3.8
0.13	0.039	8.5
0.06	0.026	7.0
0.03	0.012	1.9
0	0	73.1



2) BSA standard curve for samples up to 100mg/ml:

mg/ml	Mean Abs	CV%
100	2.189	3.6
50	1.150	4.7
25	0.520	4.9
13	0.293	3.6
6	0.156	4.6
0	0	0.4

